

**USING CENSUS 2000 DATA & GIS TO
IDENTIFY A POSSIBLE ALLEGANY COUNTY
PEER-SET**

RURAL JUSTICE INSTITUTE

GIS TEAM

June, 2005

ALLEGANY PEERS

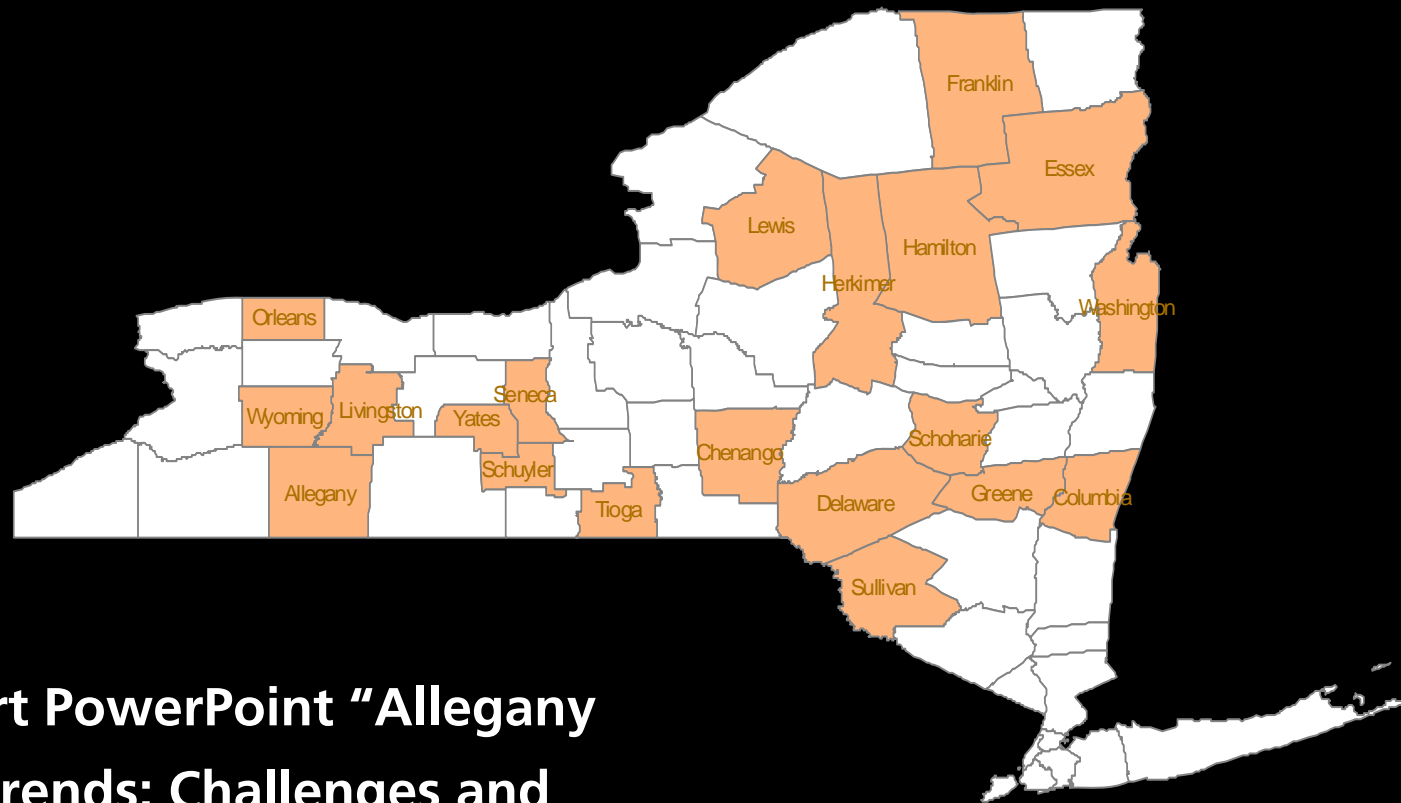
A Census 2000 Investigation

- The following analysis was inspired by Dr. Paul Eberts "Allegany County Trends: Challenges and Opportunities" presentation at Alfred University in October 2004.
- The maps presented here use the criteria utilized in that presentation as a starting point in identifying an Allegany County peer-set. Numerous additional Census 2000 criteria are mapped to strengthen the peer-set identification.

ALLEGANY PEERS

A Census 2000 Investigation

- Population of Largest Place:
 - Size of largest place < 9500 people

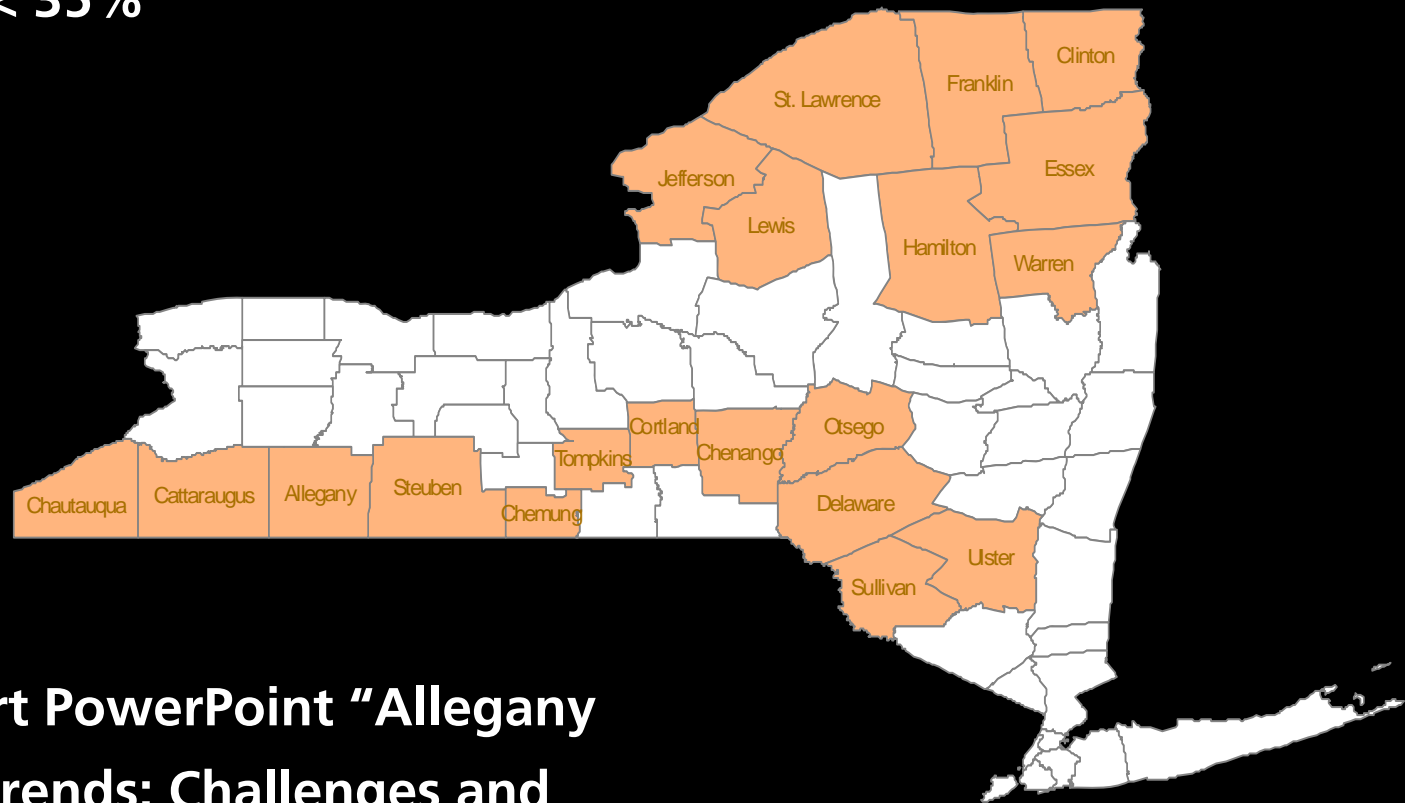


- Source:
 - Paul Ebert PowerPoint "Allegany County Trends: Challenges and Opportunities"

ALLEGANY PEERS

A Census 2000 Investigation

- **Commuting Patterns:**
 - **Work force commuting outside County < 35%**

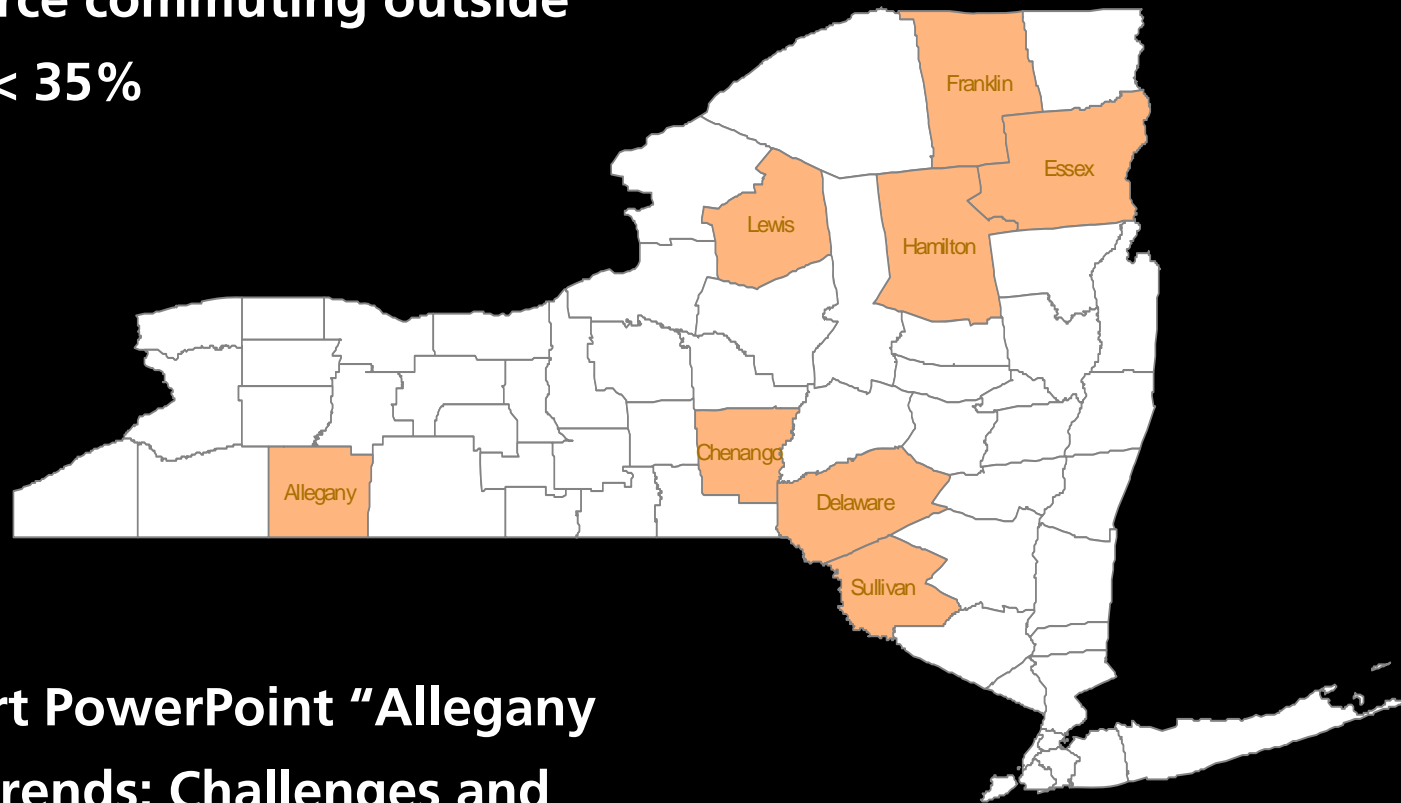


- **Source:**
 - **Paul Ebert PowerPoint "Allegany County Trends: Challenges and Opportunities"**

ALLEGANY PEERS

A Census 2000 Investigation

- Counties that meet both criteria:
 - Size of largest place < 9500 people
 - Work force commuting outside County < 35%



- Source:
 - Paul Ebert PowerPoint "Allegany County Trends: Challenges and Opportunities"

ALLEGANY PEERS

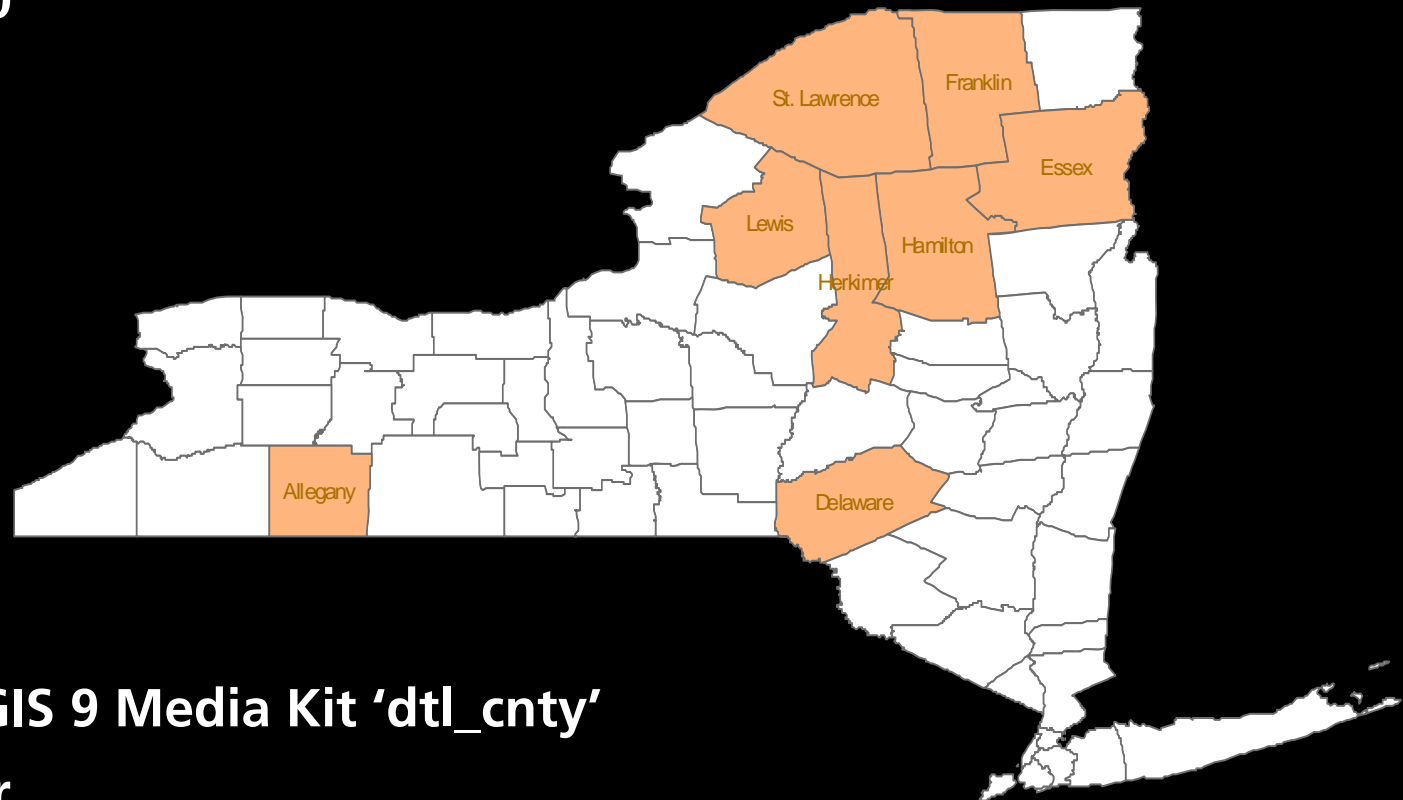
A Census 2000 Investigation

- The following slides look at additional 'attributes of place' to strengthen the identified Allegany Peer-set.

ALLEGANY PEERS

A Census 2000 Investigation

- Population Density:
 - 2000 Population per square mile < 50



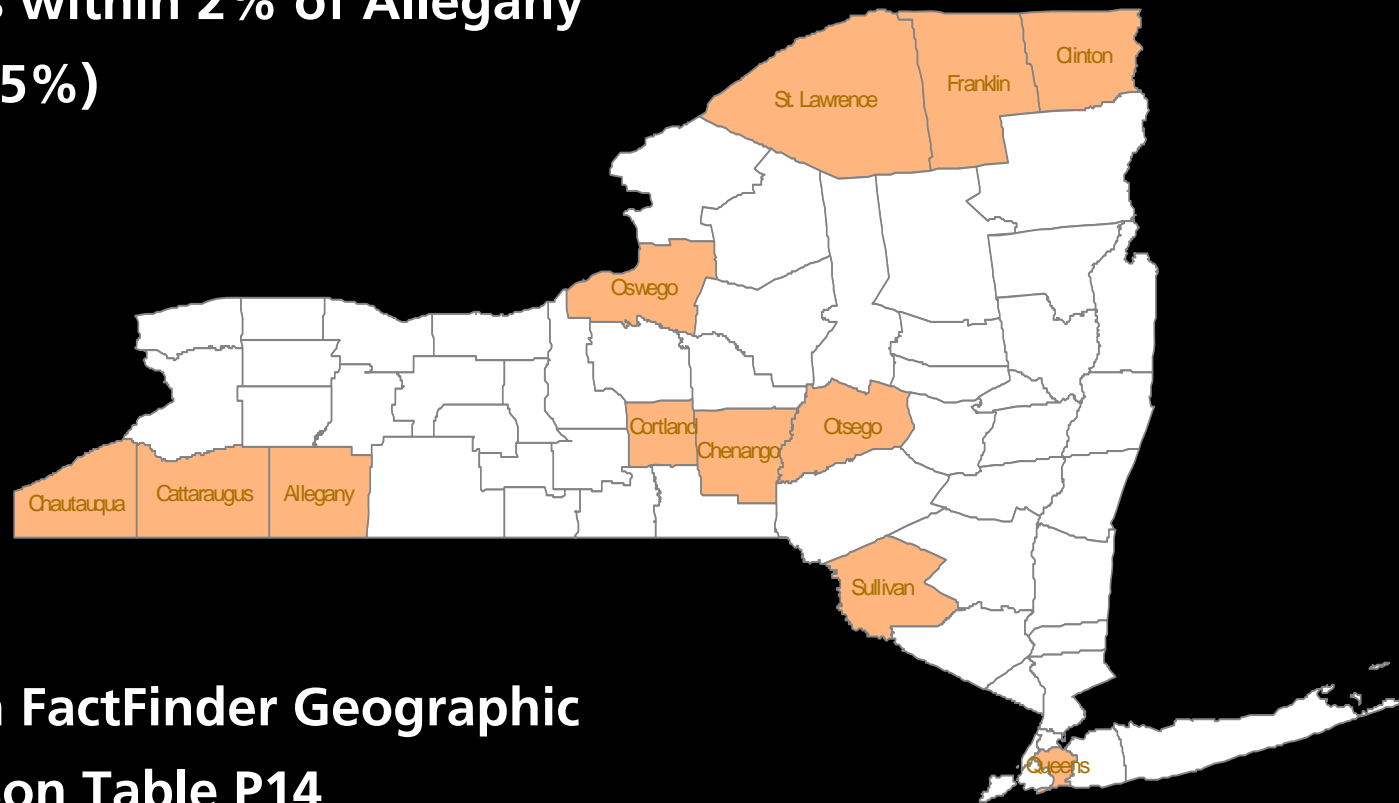
- Source:
 - ESRI ArcGIS 9 Media Kit 'dtl_cnty'
Datalayer

Population density (2000 population per square mile) for NY Counties ranges from 3 to 55,093 - with the majority of Counties (48 of 62) having less than 500 people per square mile.

ALLEGANY PEERS

A Census 2000 Investigation

- Percent of Population with Income below Poverty Level:
 - Counties within 2% of Allegany (13.5-17.5%)



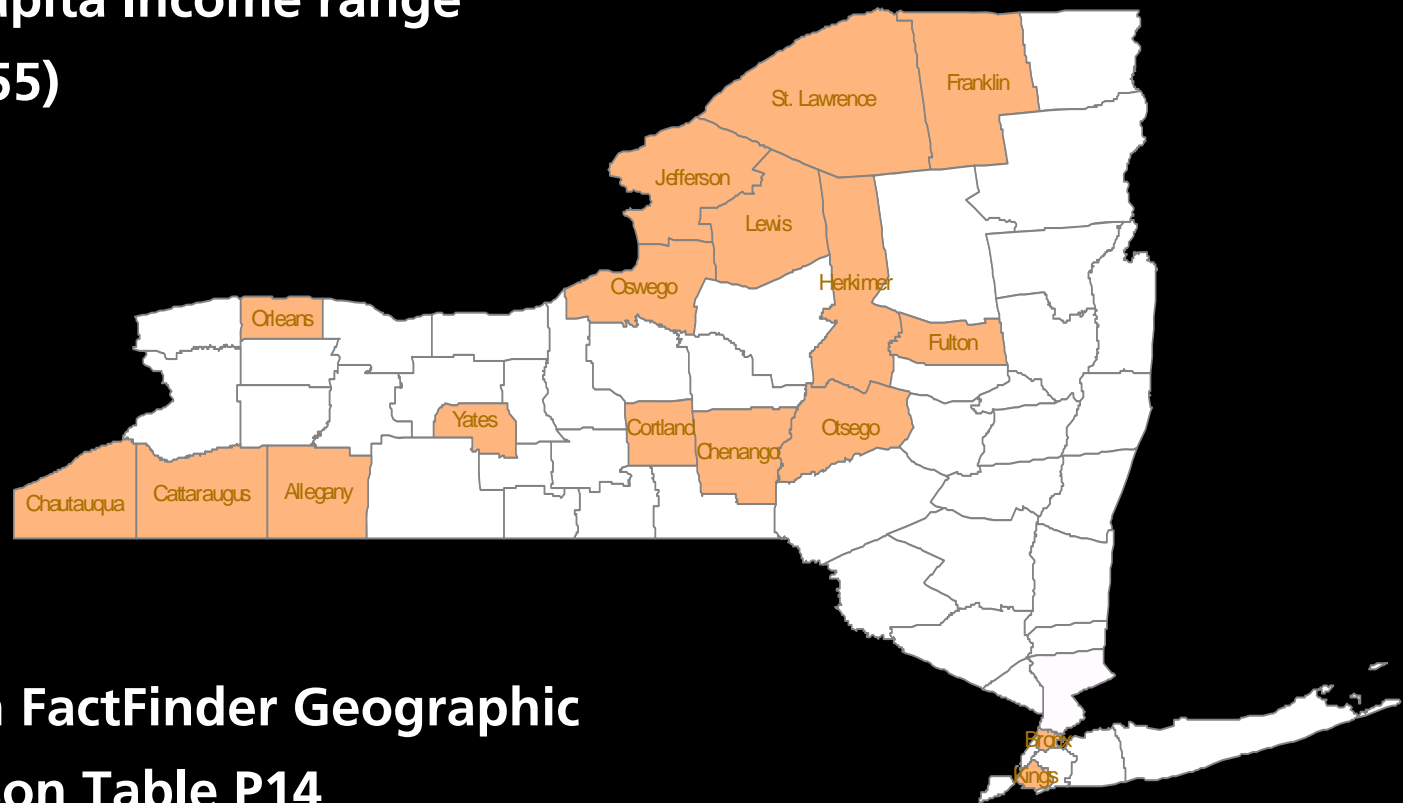
- Source:
 - American FactFinder Geographic Comparison Table P14

Percent of County Population with an income below poverty level ranges from 4.4% to 30.7% - a range of 26.3%. However, the mean is 12.2%. Allegany, at 15.5%, has the 9th highest percentage. Of the 8 with higher, 5 are in the NYC Metro area.

ALLEGANY PEERS

A Census 2000 Investigation

- Per Capita Income:
 - Counties in the bottom 10% of Per Capita Income range (< \$16,855)



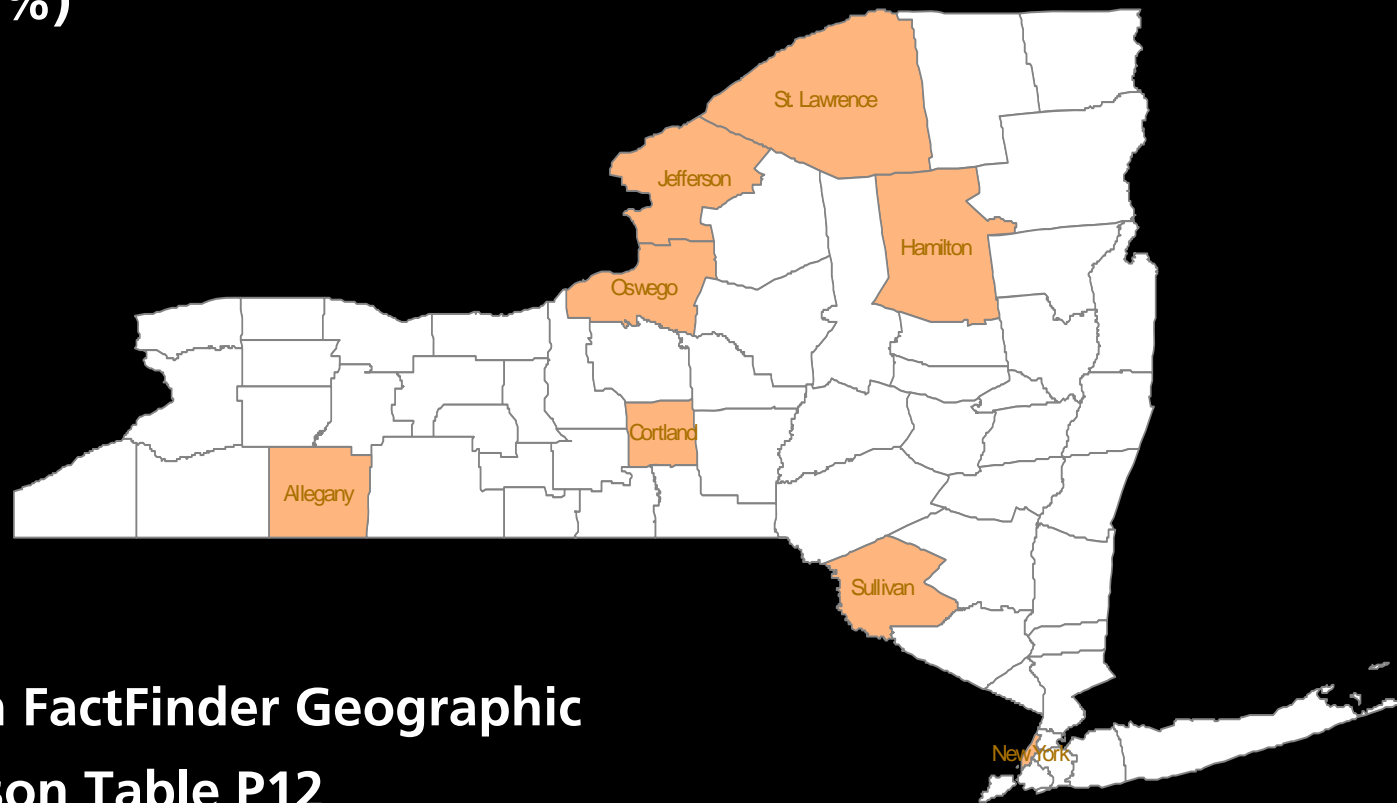
- Source:
 - American FactFinder Geographic Comparison Table P14

Per Capita Income for NY Counties ranges from \$13,959 to \$42,922 – a difference of \$28,963. Counties shown here fall in the bottom 10% (\$2,896) of this range, or < \$16,855.

ALLEGANY PEERS

A Census 2000 Investigation

- **Percent Unemployment:**
 - **Counties within 1% of Allegany (8.0-10.0%)**

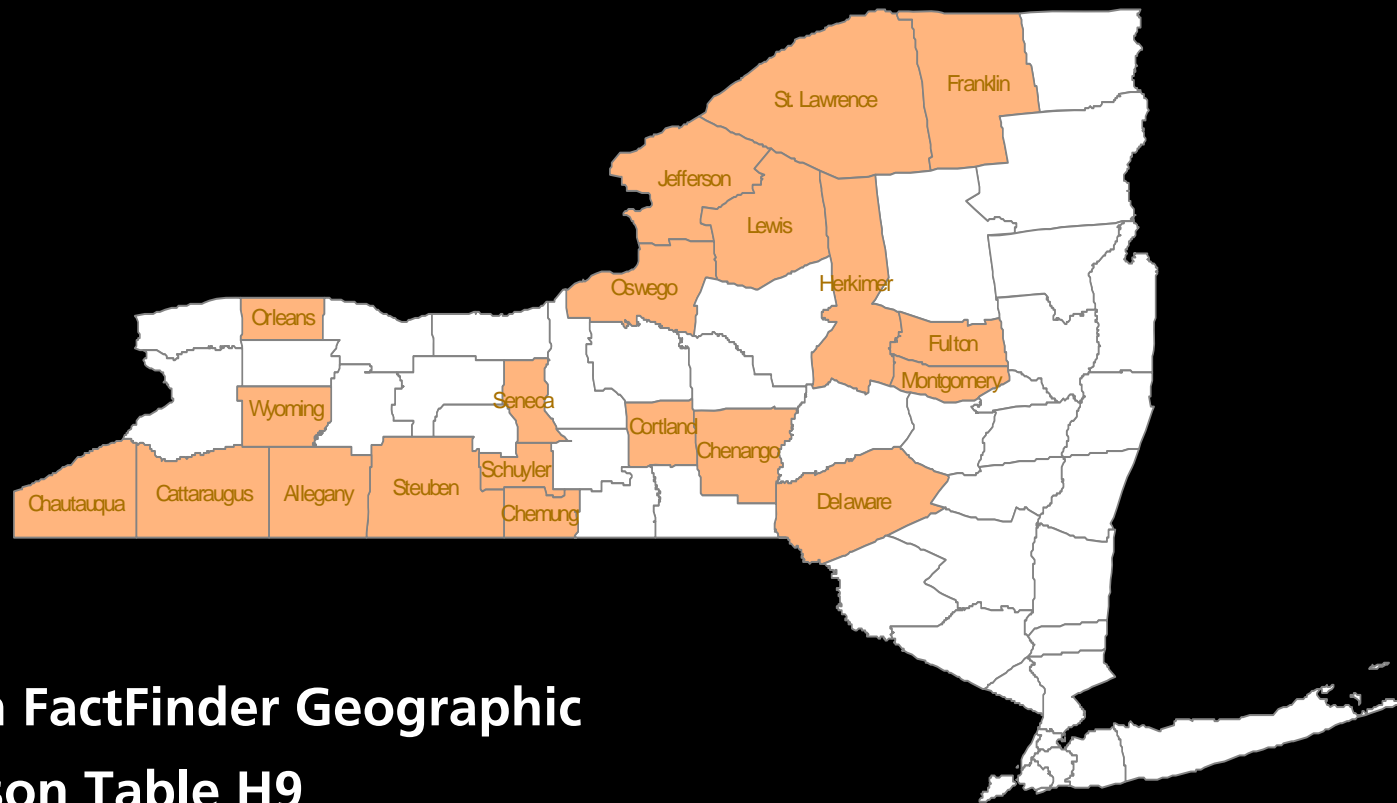


- **Source:**
 - **American FactFinder Geographic Comparison Table P12**

ALLEGANY PEERS

A Census 2000 Investigation

- Median House Value:
 - Median House Value < \$75,000



- Source:
 - American FactFinder Geographic Comparison Table H9

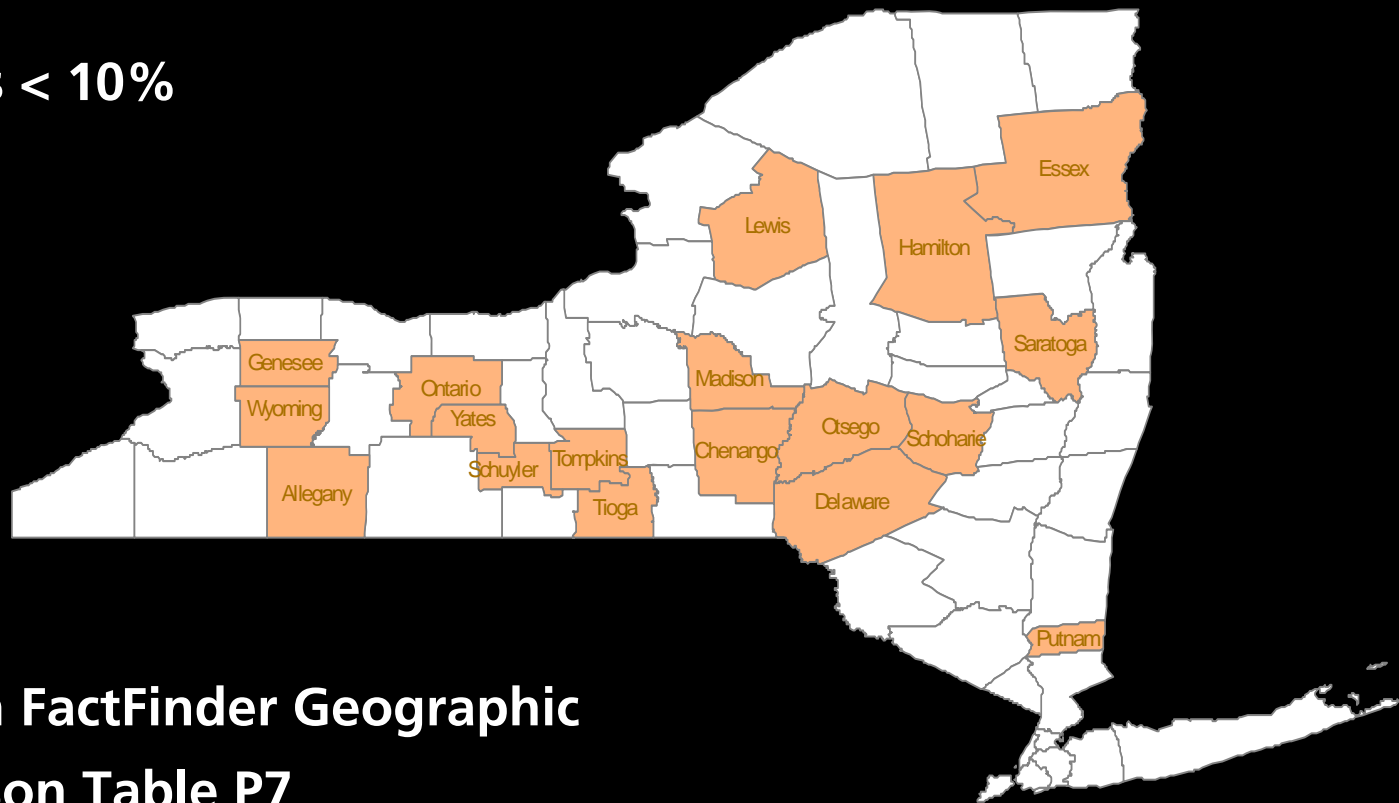
Allegany County has the lowest Median House Value in NY State (\$50,400). Median House Values range from \$50,400 to \$1,000,001. The majority (44 of 67) have values less than \$100,000.

ALLEGANY PEERS

A Census 2000 Investigation

- Allegany Peers in Percent Families with Female Parent, No Husband Present:

- Counties < 10%



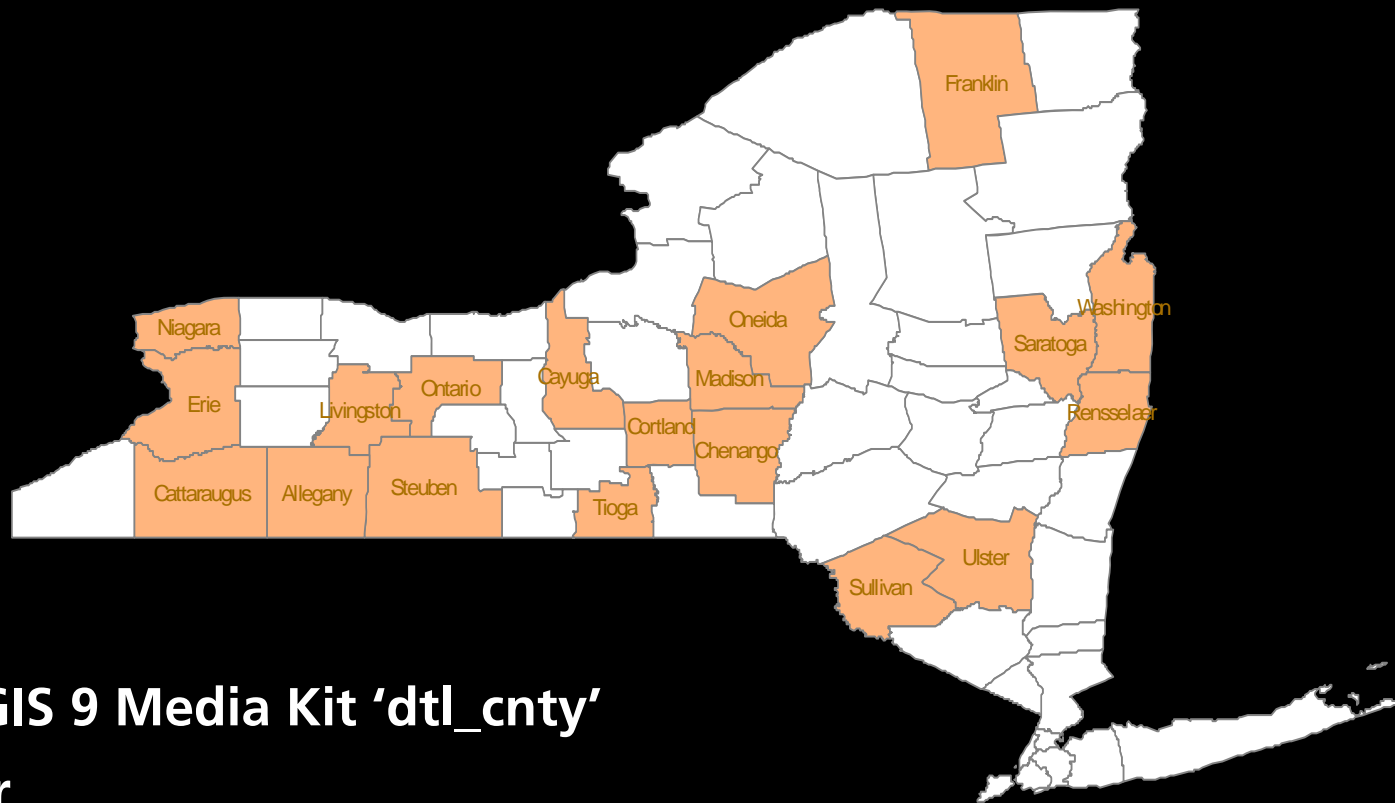
- Source:
 - American FactFinder Geographic Comparison Table P7

The actual name of the column containing the data values mapped is: "Percent of total households; Family households; Type of family; Female householder, no husband present". Values for NY Counties range from 6.7% to 30.4%, with the mean value 11.5%.

ALLEGANY PEERS

A Census 2000 Investigation

- Allegany Peers in Average Family Size:
 - Average Family Size between 3.00 and 3.05



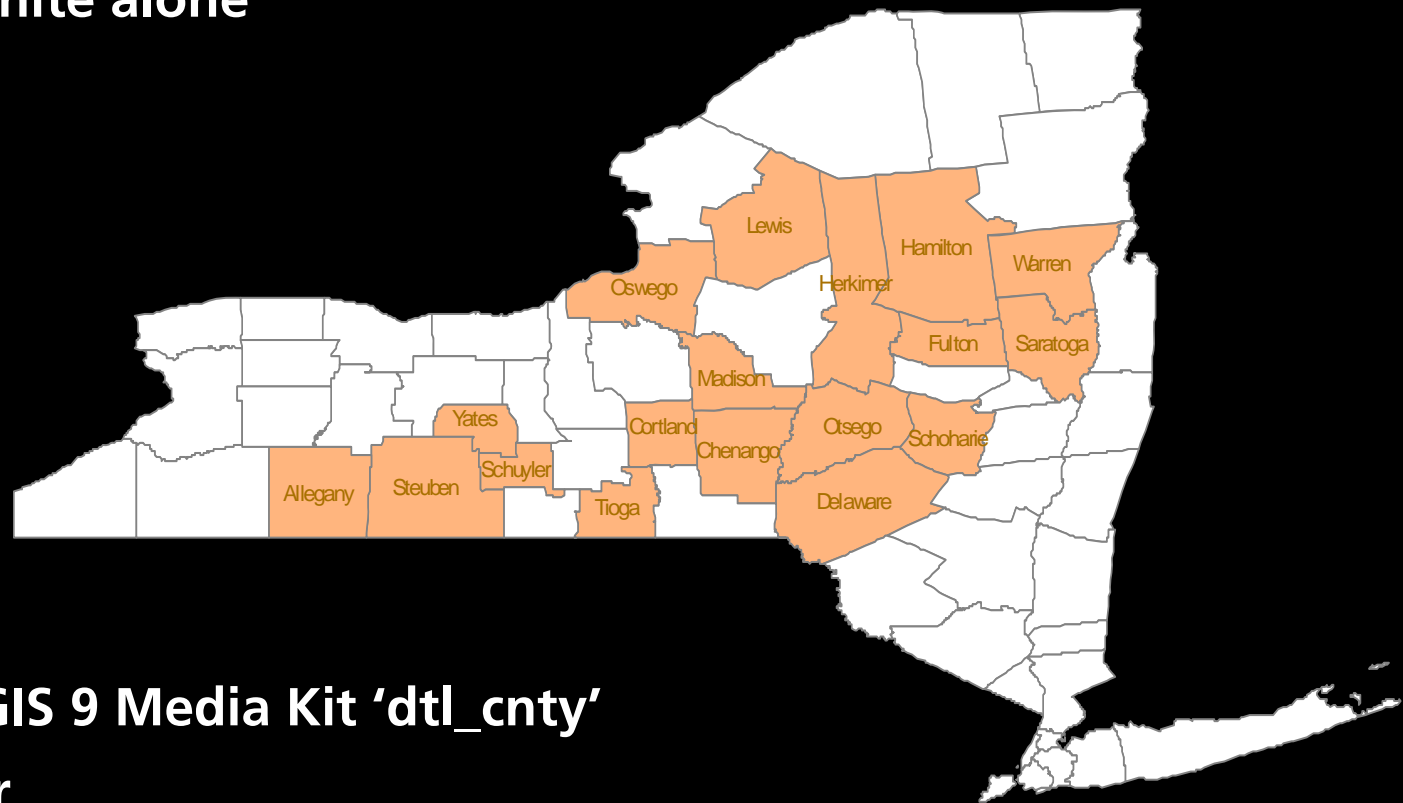
- Source:
 - ESRI ArcGIS 9 Media Kit 'dtl_cnty' Datalayer

The average family size of NY Counties ranges from 2.74 to 3.47. The mean is 3.08. Allegany County has an average family size of 3.04.

ALLEGANY PEERS

A Census 2000 Investigation

- Allegany Peers in Percent Population identified as 'White alone':
 - 96%+ White alone

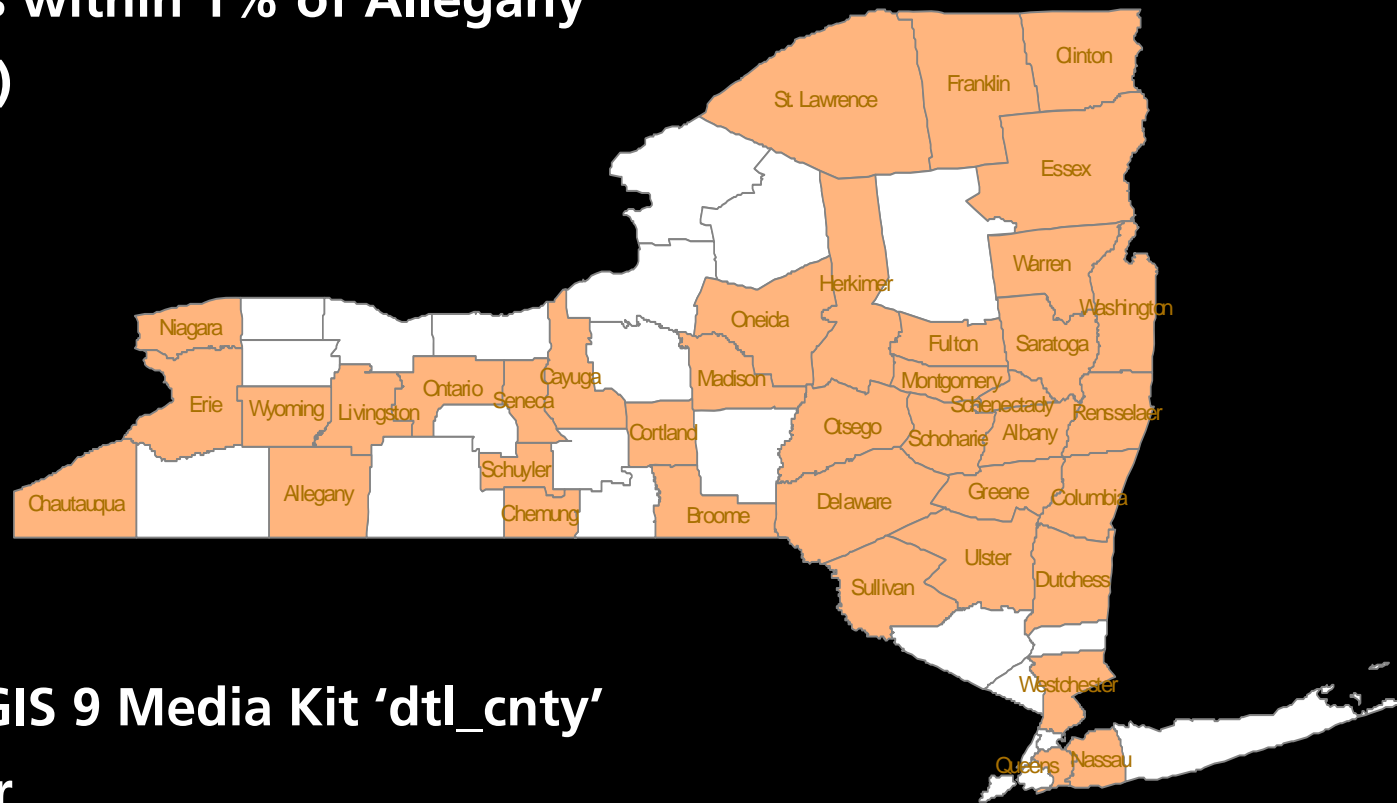


- Source:
 - ESRI ArcGIS 9 Media Kit 'dtl_cnty' Datalayer

ALLEGANY PEERS

A Census 2000 Investigation

- Allegany Peers in Percent of Population Under 18 Years of Age:
 - Counties within 1% of Allegany (23-25%)



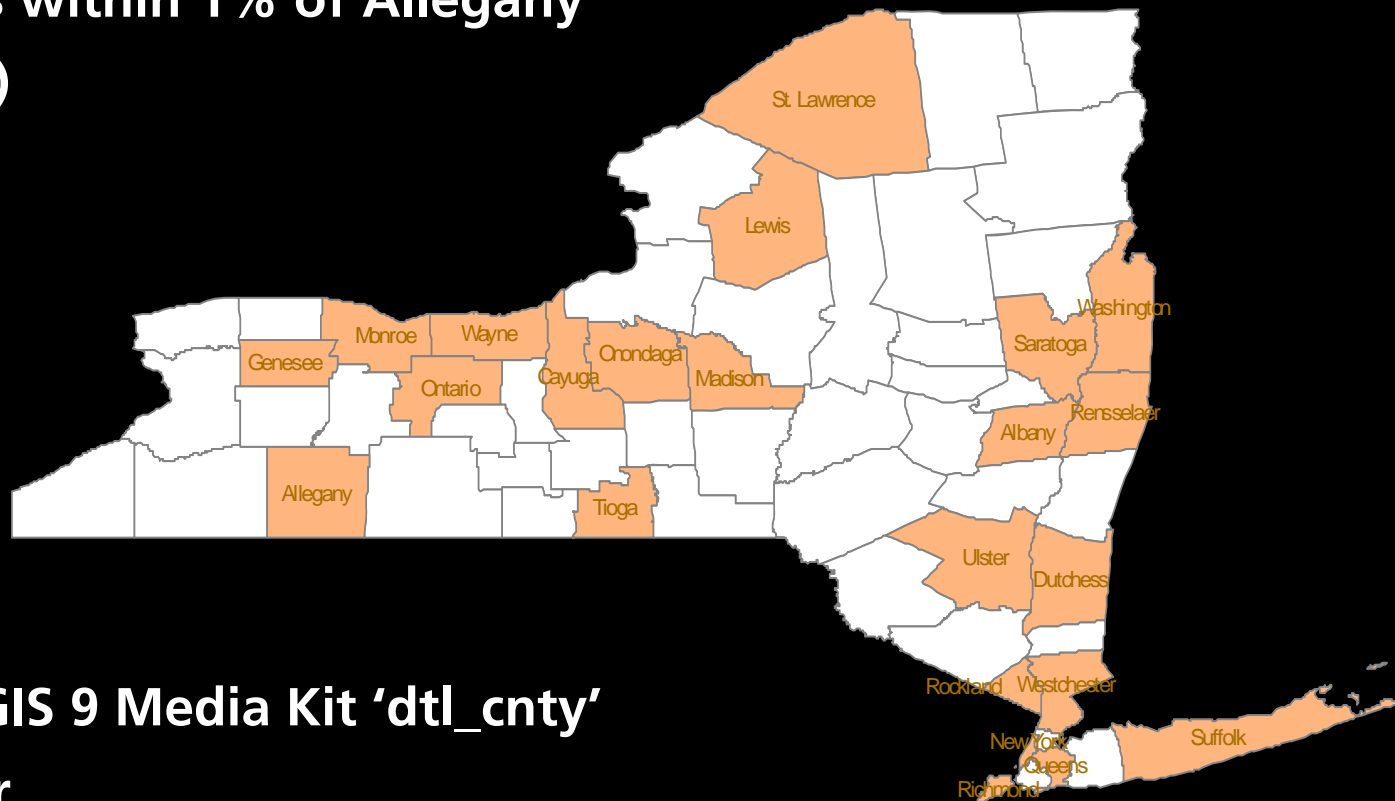
- Source:
 - ESRI ArcGIS 9 Media Kit 'dtl_cnty' Datalayer

Percent of population under 18 years of age for NY Counties ranges from 17% to 30%. Values determined by adding 'Age Under 5' and 'Age 5-17' and dividing by total population. At 24%, Allegany County was right below the mean of 25%.

ALLEGANY PEERS

A Census 2000 Investigation

- Allegany Peers in Percent of Population Over 49 Years of Age:
 - Counties within 1% of Allegany (28-30%)



- Source:
 - ESRI ArcGIS 9 Media Kit 'dtl_cnty' Datalayer

Percent of population over 49 years of age for NY Counties ranges from 22% to 42%. Values determined by adding 'Age 50-64' and 'Age 65-up' and dividing by total population. At 29%, Allegany County was right below the mean of 30%.

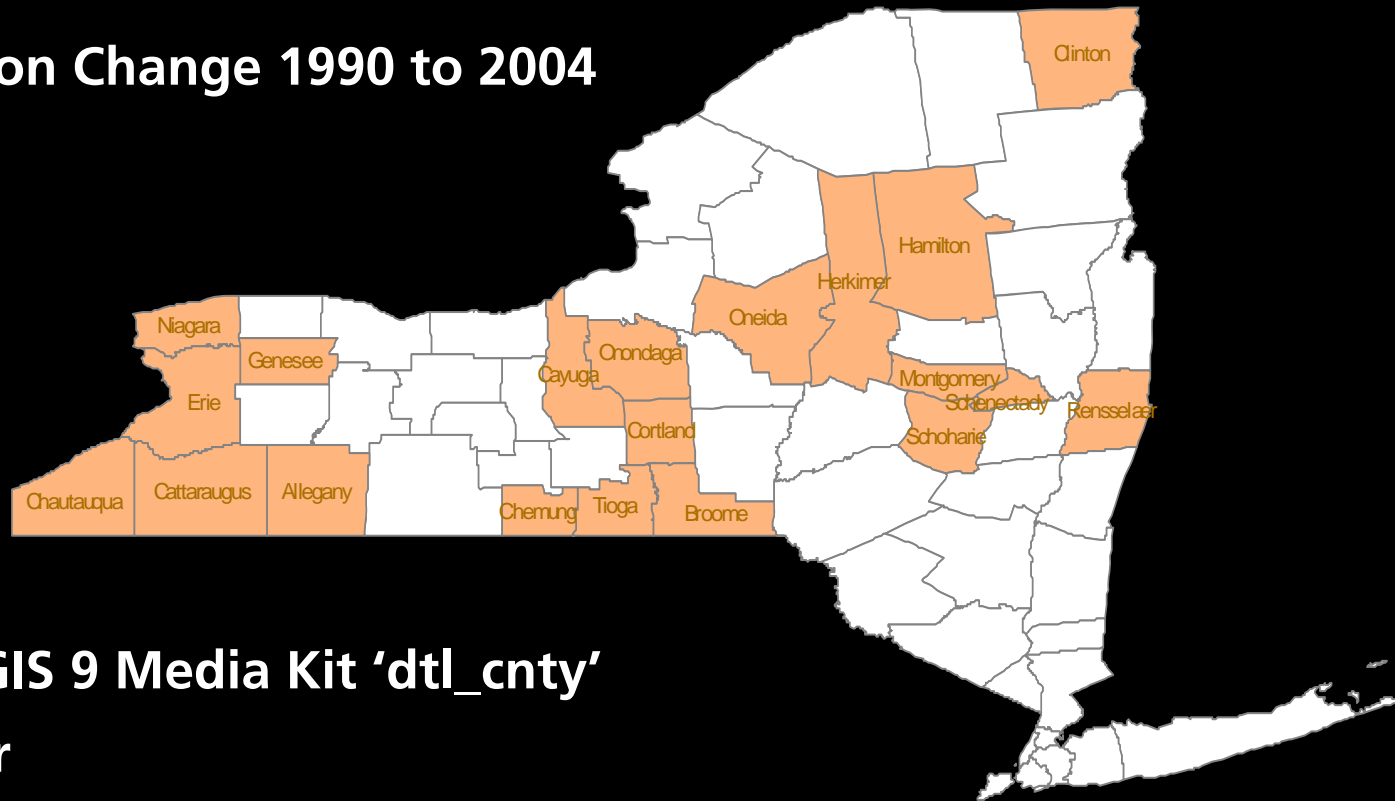
ALLEGANY PEERS

A Census 2000 Investigation

- Allegany Peers in Rate of Population

Growth:

- Population Change 1990 to 2004
 $\leq 0\%$



- Source:

- ESRI ArcGIS 9 Media Kit 'dtl_cnty' Datalayer
- American FactFinder Geographic Comparison Table GCT-Pa

(Age, Sex, and Group Quarters:1990)

Percent population growth in NY Counties from 1990 to 2004 ranges from -7% to 19%. Of the 67 NY Counties, 20 experienced no growth (0%) or a population loss. Values determined by subtracting 1990 population from 2004 population, then dividing the resulting population change number by the 2004 population to arrive at a percent change. Allegany = -1%.

ALLEGANY PEERS

A Census 2000 Investigation

- Initial Observations:
 - Generally, Counties in three geographic regions occur repeatedly in Allegany's peer-set.
 - Allegany has a wider peer-set in terms of age group percentages (slides 15 & 16).

